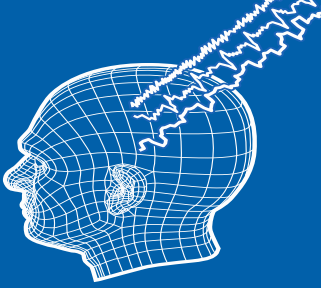


Data base on typical analgesics

investigated with LEPs at HPR



HPR

Human
Pharmacodynamic
Research

NSAIDs

- Celecoxib
- Dexketoprofen trometamol
- Diclofenac i.v.
- Dipyrone i.v. (metamizole)
- EP4 antagonist
- Etoricoxib
- Ibuprofen (racemic+enantiomer)
- Kaprofen
- Ketorolac
- Lysine clonixinate
- Naproxen
- Parecoxib i.v.
- Rofecoxib
- Valdecoxib

ASA+ASA-like

- ASA
- EBA (Ethoxy-benzoic acid)
- Ethenzamide
- Eugenol
- Paracetamol/ Acetaminophen

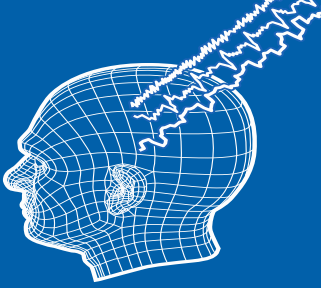
Narcotics

- Cannabinoid agonists oral + i.v.
- Codeine
- Kappa agonist oral + i.v.
- Morphine
- Oxycodone
- Pentazocine oral + i.v.
- Remifentanil i.v.
- Tramadol oral + i.v.
- Tapentadol

and other (atypical) analgesics see following page →

Data base on atypical analgesics

investigated with LEPs at HPR



HPR

Human
Pharmacodynamic
Research

H1-antagonists

- Dimethindene
- Diphenhydramine
- Orphenadrine i.v.
- ReN1869 (AH, amitriptyline-like)

Others

- Duloxetine (SSNRI)
- Ethanol oral + i.v.
- FAAH-Inhibitor
- Flupirtine (pyridine derivative)
- Lithium oral
- Reboxetine (SNARI)
- ABT102 (TRPV1 antagonist)
- Z944 (T-type CCB (oral))
- B1-antagonist (oral)*
- Granisedron (5-HT₃ antagonist)*
- Meprobamate*
- Z160 (N-type CCB* (oral))
- Propofol i.v.*

Antiepileptics

- CM40907 (exp. AE, pyridazine derivative)
- Gabapentin
- Pregabalin
- Lacosamide***

Topicals

- ASA powder
- Dimethindene gel 0.1% (AH)
- DMSO solution + additives
- Lidocaine gel 2%,
- Lidocain solution 0.25% and lozenges (oral cavity)
- B1-antagonist (topical)* (blocks bradykinin)
- NK1-antagonist (topical)* (blocks substance P)

* Compounds in red are not or minor effective in clinical pain conditions **and** in human experimental LEP settings